

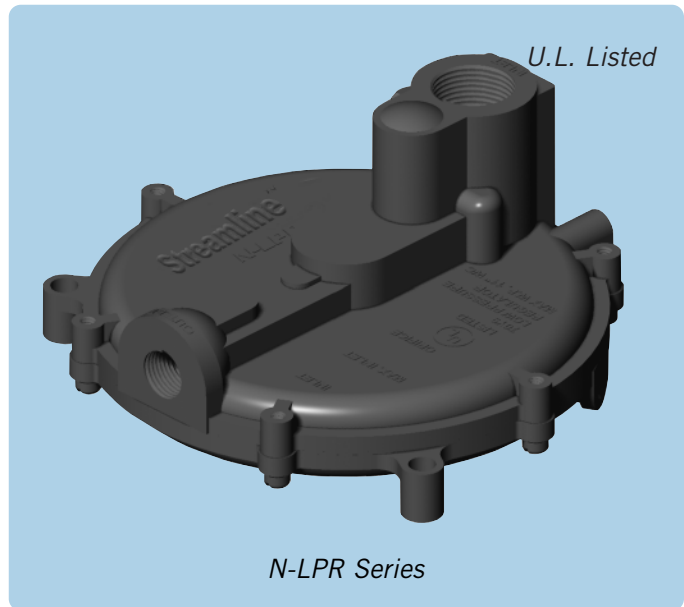
Model N-LPR Series Regulator –

LP: 40 HP (29.83 kW)

NG: 30 HP (22.37 kW)

DESCRIPTION The N-LPR is designed for sensitivity and simple operation. It is used with low pressure gaseous fuels, where dependable starting is required. Because of its extreme sensitivity, the N-LPR offers excellent results in most remote starting applications (standby power generators, etc.) if installed and maintained properly. Suitable for LP engines up to 40 HP (29.83 kW) and NG engines up to 30 HP (22.37 kW).

OPERATION The N-LPR is an automatic zero regulator. The engine creates a vacuum which acts through the outlet of the N-LPR on the diaphragm. Atmospheric pressure then forces the diaphragm toward the vacuum, depressing the lever and pulling the valve seat away from the orifice which allows fuel to flow as long as the demand persists. When the vacuum ceases, a spring force pushes on the lever and forces the seat valve against the orifice shutting off the fuel flow. It is important to remember that fuel should not flow through the N-LPR when the engine is not running. A properly adjusted N-LPR requires a vacuum of less than 0.35 inH₂O (0.872 mbar) to start the opening sequence. Due to this sensitivity, most installations do not need priming to start unless low cranking speed or restricted and lengthy piping are required.



N-LPR Series

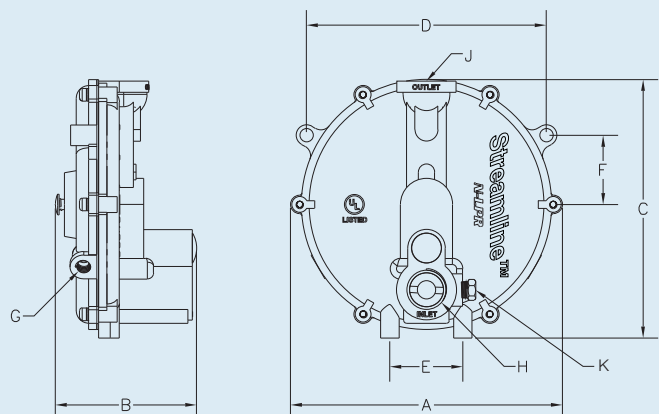
- Sensitive, low pressure vapor regulator with precise break-off setting
- 14 inH₂O / 6 oz. (27.39 mbar / 25.86 mbar) maximum inlet pressure

CAUTION — INSTALLATION & SERVICE
Only trained, certified technicians should perform installation, service or replacement of fuel delivery components.

NOTE — NFPA CODES & STANDARDS
For indoor applications by NFPA definition, a regulator is not considered a positive shut-off valve. An approved automatic shut-off device is required to be installed. This will shut off the fuel supply should the engine fail while unattended. Shut-off devices come in vacuum- or solenoid-actuated configurations.

REGULATOR SPECIFICATIONS

- A. Overall Width 6¼" (158.8 mm)
- B. Overall Depth 3⅝" (92.1 mm)
- C. Overall Height. 6½" (165.1 mm)
- D, E. Mounting Holes
Center to Center. (146.1mm; 44.5 mm)
- F. Mounting Holes
Distance from Center 1⅒" (42.1 mm)
- G. Air Vent NPT ⅛" (3.2 mm)
- H. Vapor Fuel Inlet NPT. ¾" (19.1 mm)
- J. Vapor Fuel Outlet NPT ⅜" (9.5 mm)
- K. Test Port NPT ⅛" (3.2 mm)



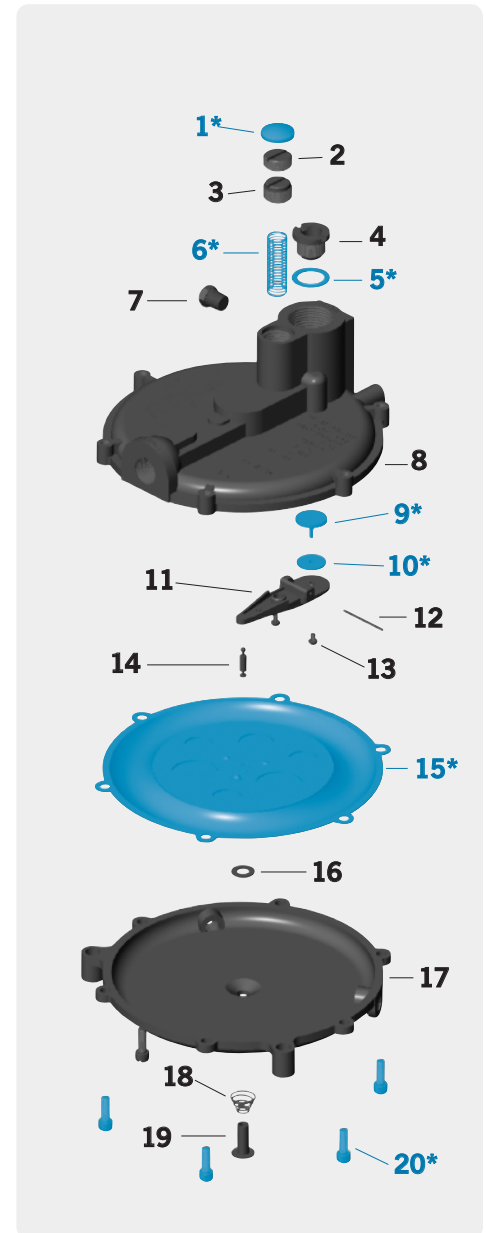
PARTS LISTING

Item	Part No.	Description	Qty.
1	N-C11-1	CAP, ADJ. SCREW, TR	1
2	N-S2-18	Screw, Lock, Adj. Spring	1
3	N-S2-11-LPR	Screw, Pressure Adjustment	1
4	N-J1-3	Jet	1
5	N-W1-6	SEAL, JET	1
6	N-S3-14	SPRING	1
7	N2-1011	Plug, 1/8 NPT, Slotted Head	1
8	N-B1-3-LPR	Standard Body	1
9	N-S5-1	SEAT	1
10	N-W1-5-LPR	WASHER, SEAT BACKUP	1
11	N-L1-5A	Lever Assembly	1
12	N-P1-11-LPR	Pin, Lever Fulcrum	1
13	N-S10-11	Screw, #4-40 x 1/4" Pan Head	2
14	N-P1-12	Pin, Connector	1
15	N-D1-7A	DIAPHRAGM ASSEMBLY, SILICONE	1
16	N00-7505	N-W1-27, Washer, Primer	1
17	N-C1-7-LPR	Cover, Back	1
18	N-S2-21-LPR	Spring, Primer	1
19	N-R11-2	Pin, Primer	1
20	N00-6400	SCREW, 10-24 X 5/8" SLOTTED FILISTER HEAD WITH SPLIT LOCKWASHER, SEMS	6 (RK 4)

ORDERING INFO

Part No.	Maximum Inlet Pressure	Tamper-Resistant	Primer	UL Listed
N-LPR-1A	14 inH ₂ O / 6 oz. (27.39 mbar / 25.86 mbar)	•		•
N-LPR-2A	14 inH ₂ O / 6 oz. (27.39 mbar / 25.86 mbar)		•	•
N-LPR-3A	14 inH ₂ O / 6 oz. (27.39 mbar / 25.86 mbar)	•	•	•
N-LPR-4A	14 inH ₂ O / 6 oz. (27.39 mbar / 25.86 mbar)			•
5233-1020	14 inH ₂ O / 6 oz. (34.86 mbar / 25.86 mbar)	•	•	•
5233-1025	14 inH ₂ O / 6 oz. (34.86 mbar / 25.86 mbar)			•

Note: While only certain parts are available for purchase, all parts are listed for reference purposes.



Note: Parts in blue are components of Repair Kit (N-RK-LPR).