

Model N-J – 100 HP (74.57 kW)

DESCRIPTION The N-J type regulator is an LPG liquid withdrawal high pressure regulator. This regulator provides excellent fuel delivery with liquid-cooled engines up to 100 HP (74.57 kW).

OPERATION Liquid propane enters the regulator and then is vaporized using heat from the engine's coolant. Tank pressure is reduced to approx. 1.5 psi (10.342 kPa). As negative pressure is transmitted from the carburetor to the regulator, the regulator releases propane vapor to the carburetor. Some regulators are equipped with a primer button. Correctly installed regulator should not require priming. If priming is required, a maximum duration of only 1 second should be used.



U.L. Listed†



N-J Series

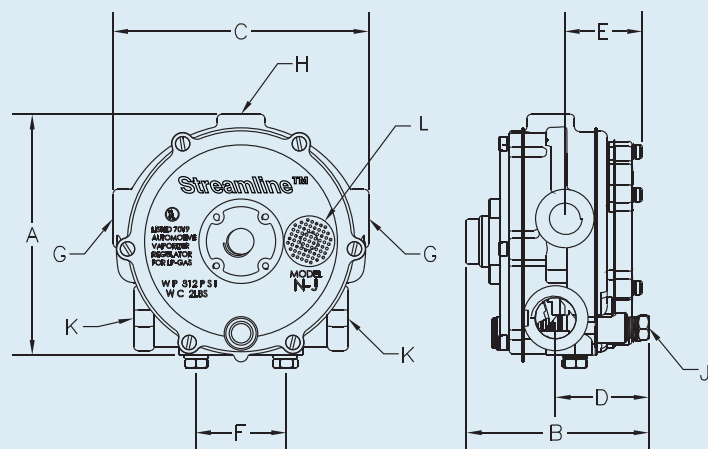
- Propane liquid withdrawal vaporizing regulator
- For liquid-cooled engines up to 100 HP (74.57 kW)
- Ideal for mobile industrial equipment applications
- Rated to 312 psi (2151.16 kPa) maximum inlet pressure
- Can be made without primer button

CAUTION — INSTALLATION & SERVICE
 Only trained, certified technicians should perform installation, service or replacement of fuel delivery components.

NOTE — NFPA CODES & STANDARDS
 For indoor applications by NFPA definition, a regulator is not considered a positive shut-off valve. An approved automatic shut-off device is required to be installed. This will shut off the fuel supply should the engine fail while unattended. Shut-off devices come in vacuum- or solenoid-actuated configurations.

REGULATOR SPECIFICATIONS

- A. Overall Height 4 $\frac{3}{8}$ " (111.1 mm)
- B. Overall Depth 3" (76.2 mm)
- C. Overall Width 4 $\frac{1}{2}$ " (117.5 mm)
- D. Back of Regulator to Center of Vapor Fuel Outlet 1 $\frac{5}{8}$ " (41.3 mm)
- E. Back of Regulator to Center of Water Outlet 1 $\frac{3}{8}$ " (34.9 mm)
- F. Mounting Holes Center to Center 1 $\frac{5}{8}$ " (41.3 mm)
- G. Coolant Inlet & Outlet NPT $\frac{3}{8}$ " (9.5 mm)
- H. Liquid Fuel Inlet NPT $\frac{1}{4}$ " (6.4 mm)
- J. Primary Test Port NPT $\frac{1}{8}$ " (3.2 mm)
- K. Vapor Fuel Outlet NPT $\frac{1}{2}$ " (12.7 mm)
- L. Vent/Balance Line Connect NPT $\frac{1}{8}$ " (3.2 mm)



PARTS LISTING

Item	Part No.	Description	Qty.
1*	N00-6443	N-S1-59, SCREW, 8-32 X 5/8" SEMS	6 (RK 2)
2	N00-7004	N-S7-4, Screen, Atmospheric Vent (Part of Item 3)	1
3	N00-4523A	N-AC1-34, Cover Assembly, Secondary: (N-C1-34, N-S2-21, N-W1-27, N-S7-4)	1
4	N00-7505	N-W1-27, Washer, Hand Primer (Part of Item 3)	1
5*	N00-4722A	N-AD1-26, DIAPHRAGM ASSEMBLY, SECONDARY, SILICONE	1
6*	N00-6434	N-S1-42, SCREW, 8-32 X 3/8" SEMS	1
7	N00-5651A	N-AL1-37, Lever Assembly, Secondary Regulator	1
8	N00-5904	N-P1-8, Pin, Secondary, Fulcrum	1
9*	N00-6812	N-S4-27, SEAT, SECONDARY REGULATOR	1
10*	N00-6618**	N-S2-35, SPRING, BLUE SECONDARY	1
	N00-6621**	N-S2-38, SPRING, ORANGE SECONDARY	1
11	N00-4229A	N-AB1-33, Body Assembly	1
12	N00-6402	N-S1-5, Screw 1/4-20 x 5/8" SEMS	2
13	N00-6105	N-P3-14, Plug 1/2 NPT	1
14*	N00-6804	N-S4-16, SEAT, PRIMARY REGULATOR	1
15*	N00-5256	N-G1-85, GASKET, BODY TO PLATE	1
16	N00-6009	N-P2-26, Plate, Converter Body Cover	1
17	N00-6104	N-P3-13, Plug 1/8" Pipe, Hex Head	1
18	N00-6711	N-S2-36, Spring, Primary Valve	1
19*	N00-5907	N-P1-14, PIN, PRIMARY VALVE	1
20*	N00-4717A	N-AD1-22, DIAPHRAGM ASSEMBLY, PRIMARY 1	1
21	N00-4521	N-C1-33, Cover, Primary Regulator	1
22*	N00-6406	N-S1-10, SCREW, 8-32 X 1" SEMS	7 (RK 2)

* Indicates Repair Kit Components

** Two outlet fuel flow initiation pressures are available. Orange secondary spring (N00-6621) requires approximately -0.5 inH2O (-1.245 mbar) to initiate fuel flow. Blue secondary spring (N00-6618) requires approximately -1.5 inH2O (-3.736 mbar)

*** Version without primer button available

REPAIR KIT: (Components marked with (*) and shown in blue)

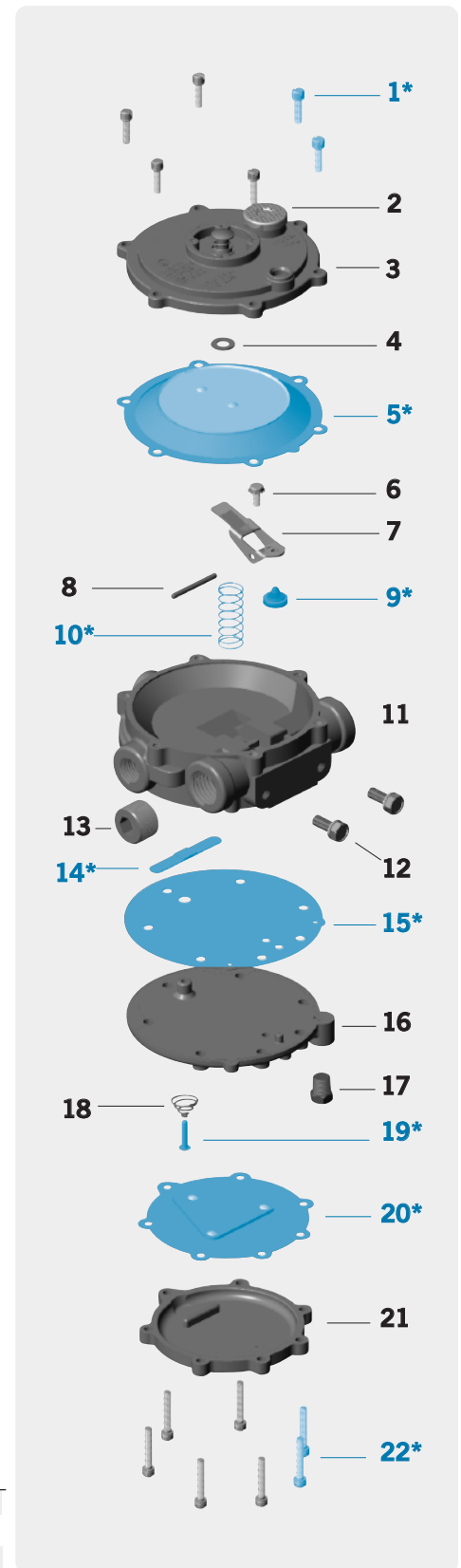
N00-6313A N-RK-J-2, Repair Kit with Silicone Diaphragm
Blue and Orange Secondary Springs

ORDERING INFO

Part No.	Model No.	Vacuum			Diaphragm	Primer	Check Valve	Inline Filter	UL Listed‡
		H2O	Spring						
N00-0005A	N-JB-2	1.5	Blue	Silicone				•	
N00-0009A	N-JB-2	1.5	Blue	Silicone		•			
N00-0013-GA	N-JO-GA	0.5	Orange	Silicone		Special	idel		
N00-0014A	N-JO-2	0.5	Orange	Silicone				•	

(‡) See ordering info chart for U.L. Listed models.

Note: While only certain parts are available for purchase, all parts are listed for reference purposes.



Note: Parts in blue are components of Repair Kit (N-RK-J-2).