

Model N-H420 Regulator – 350 HP (261 kW)

DESCRIPTION The N-H420 two-stage regulator is an LPG liquid withdrawal high pressure regulator with a heat exchanger that will vaporize enough fuel for up to 350 HP (261 kW) engines.

OPERATION With the N-H420's improved vaporization characteristics, liquid propane enters the regulator and then is vaporized using heat from the engine's coolant. Tank pressure is reduced to approximately 1.5 psi (10.342 kPa). As negative pressure is transmitted from the carburetor to the regulator, the regulator releases propane vapor to the carburetor. Some regulators are equipped with a primer button. Correctly installed regulator should not require priming. If priming is required, a maximum duration of only 1 second should be used.



U.L. Listed



N-H420 Series

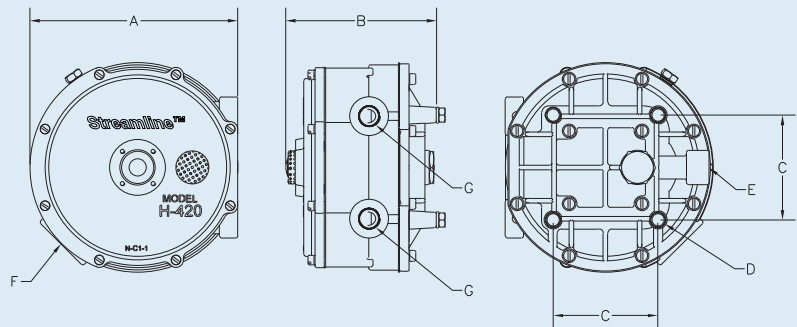
- Propane liquid withdrawal vaporizing regulator
- For liquid-cooled engines up to 350 HP (261 kW)
- Compact, low-profile design
- Rated to 312 psi (2151.16 kPa) maximum inlet pressure
- Version without primer button available

CAUTION — INSTALLATION & SERVICE
 Only trained, certified technicians should perform installation, service or replacement of fuel delivery components.

NOTE — NFPA CODES & STANDARDS
 For indoor applications by NFPA definition, a regulator is not considered a positive shut-off valve. An approved automatic shut-off device is required to be installed. This will shut off the fuel supply should the engine fail while unattended. Shut-off devices come in vacuum- or solenoid-actuated configurations.

REGULATOR SPECIFICATIONS

- A. Overall Width 5¾" (146.1 mm)
- B. Overall Depth 4¼" (104.8 mm)
- C. Mounting Holes
 Center to Center . 2⅞" x 2⅞" (73 mm x 73 mm)
- D. Mounting Hole Diameter ¼"-20 (4)
- E. Fuel Inlet NPT ¼" (6.4 mm)
- F. Fuel Outlet NPT 1" (25.4 mm)
- G. Coolant Inlet and Outlet NPT ⅜" (9.5 mm)



PARTS LISTING

Item	Part No.	Description	Qty.
1*	N00-6443	COVER SCREW, 8-32 X 5/8"	8 (RK 4)
2	N00-7004	Screen, Secondary	1
3	N-C1-1A	Cover Assembly, Secondary	1
4*	N-D1-2A	DIAPHRAGM ASSEMBLY, SECONDARY, SILICONE	1
5	N00-6443	Cover Screw, 8-32 x 5/8"	8
6	N-P1-2	Pin, Secondary Lever Fulcrum	1
7	N-L1-1	Lever, Secondary	1
8*	N-V1-1A	VALVE, SECONDARY	1
9	N-S3-2	Spring, Secondary (Blue)**	1
10	N-S3-3	Spring, Secondary (Orange)**	1
11	N-C1-2	Cover, Primary Diaphragm	1
12	N-S3-4	Spring, Primary Regulator	2
13*	N-D1-3A	DIAPHRAGM ASSEMBLY, PRIMARY	1
14	N-B1-1A	Body Assembly	1
15	N00-6104	Plug, 1/8" Pipe	1
16	N-P1-3	Pin, Primary Valve Operating	1
17*	N-G1-1	GASKET, GAS & WATER CHAMBER	1
18	N-C1-3	Cover, Gas & Water Chamber	1
19*	N00-6400	COVER SCREW, 10-24 X 5/8"	12 (RK 2)
20	N00-6402	Mounting Screw, 1/4"-20 x 5/8"	4
21*	N-V1-2A	VALVE, PRIMARY REGULATOR	1
22	N-S3-5	Spring, Valve Closing	1
23*	N-O1-1	O-RING, LP-GAS INLET	1
24	N-P3-2	Plug, LP-Gas Inlet	1

* Indicates Repair Kit Components

** Two outlet fuel flow initiation pressures are available. Orange secondary spring (N-S3-3) requires approximately -0.5 inH2O (-1.245 mbar) to initiate fuel flow. Blue secondary spring (N-S3-2) requires approximately -1.5 inH2O (-3.736 mbar).

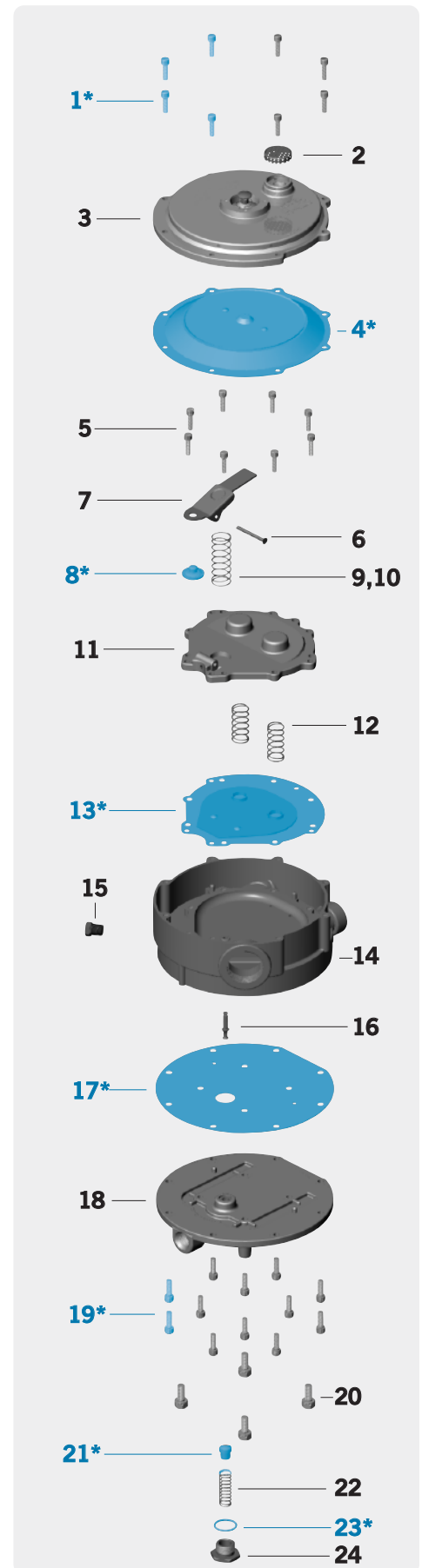
*** Version without primer button available

REPAIR KIT: (Components marked with (*) and shown in blue)

N-RKH420SA Repair Kit with Silicone Diaphragm

ORDERING INFO

Part No.	Description
N-H420-SA	N-H420 Regulator, <i>Blue Spring with Silicone Diaphragm (UL Listed)</i>
N-H420-OSA	N-H420 Regulator, <i>Orange Spring with Silicone Diaphragm (UL Listed)</i>



Note: Parts in blue are components of Repair Kit (N-RKH420SA).

Note: While only certain parts are available for individual purchase, all parts are listed for reference purposes.