

Model N-EB-2 Series Regulators For LP-Gas – 300 HP (223.71 kW)

DESCRIPTION The N-E regulator is an LPG liquid withdrawal high pressure regulator. This regulator provides excellent fuel delivery with liquid-cooled engines up to 300 HP (223.71 kW).

OPERATION Inside the N-E regulator, liquid propane enters the regulator and then is vaporized using heat from the engine's coolant. Tank pressure is reduced to approximately 1.5 psi (10.342 kPa). As negative pressure is transmitted from the carburetor to the regulator, the regulator releases propane vapor to the carburetor. N-E regulators are equipped with a primer button. A correctly installed regulator should not require priming. If priming is required, a maximum duration of only 1 second should be used.

Streamline™



N-EB-2 Series

- Propane liquid withdrawal vaporizing regulator
- For liquid-cooled engines up to 300 HP (223.71 kW)
- -1.5 inH₂O (-3.736 mbar) fuel initiation (break-off) pressure
- Rated to 312 psi (2151.16 kPa) maximum inlet pressure



CAUTION — INSTALLATION & SERVICE

Only trained, certified technicians should perform installation, service or replacement of fuel delivery components.

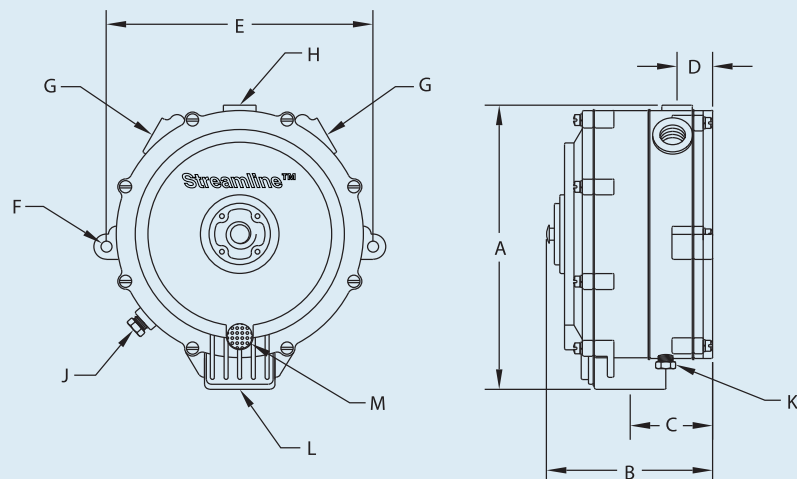


NOTE — NFPA CODES & STANDARDS

For indoor applications by NFPA definition, a regulator is not considered a positive shut-off valve. An approved automatic shut-off device is required to be installed. This will shut off the fuel supply should the engine fail while unattended. Shut-off devices come in vacuum- or solenoid-actuated configurations.

REGULATOR SPECIFICATIONS

- A. Overall Height 7¼" (184.2 mm)
- B. Overall Depth 4" (101.6 mm)
- C. Back of Converter to Center of Vapor Fuel Outlet 2" (50.8 mm)
- D. Back of Converter to Center of Water Outlet 1" (25.4 mm)
- E. Mounting Holes, Center-to-Center 6⅝" (168.3 mm)
- F. Mounting Hole Diameter ⅝" (7.1 mm)
- G. Coolant Inlet & Outlet NPT ⅜" (9.5 mm)
- H. LPG Fuel Inlet NPT ¼" (6.4 mm)
- J. Secondary Accessory Port NPT. ⅛" (3.2 mm)
- K. Primary Test Port NPT. ⅛" (3.2 mm)
- L. Vapor Fuel Outlet NPT. 1" (25.4 mm)
- M. Vent/Balance Line Connection NPT. ⅛" (3.2 mm)



PARTS LISTING

Item	Part No.	Description	Qty.
1*	N00-6400	N-S1-3, SCREW, 10-24 X 5/8" SEMS	8 (RK 3)
2	N00-7002	N-S7-1, Screen, Atmospheric Vent	1
3	N00-4509	N-ACI-22-1, Cover Assembly, Secondary: with Primer Button	1
4	N00-7505	N-W1-27, Washer, Hand Primer	1
5*	N00-4718A	N-AD1-23, DIAPHRAGM ASSEMBLY, SECONDARY, SILICONE: N-D1-23, N-P22-14, N-P2-14 (2), N-L2-1, N-R2-3 (2)	1
6*	N00-5681	N-L1-86A, LEVER, SILICONE	1
7	N00-5903	N-P1-7, Pin, Secondary Lever Fulcrum	1
8	N00-6610**	N-S2-22, Spring, Secondary Regulator, (Blue) -1.5 inH2O (-3.736 mbar)	1
9*	N00-6820	N-S4-37, SEAT, SECONDARY	1
10*	N00-6431	N-S1-39, SCREW, 12-24 X 7/8" SEMS	7 (RK 2)
11*	N00-6432	N-S1-40, SCREW, 10-24 X 3/8" SEMS	2
12	N00-4506	N-C1-20, Cover, Primary Diaphragm	1
13	N00-6604	N-S2-13, Spring, Primary Regulator	2
14*	N00-4709A	N-AD1-15, DIAPHRAGM ASSEMBLY, PRIMARY: N-D1-15, N-P2-16, N-P2-17, N-R2-3 (3)	1
15*	N00-5906	N-P1-11, PIN, PRIMARY VALVE	1
16	N00-4216	N-AB1-20, Body, Regulator: N-B1-20, N-J1-13	1
17	N00-6104	N-P3-13, Plug, 1/8" Pipe, Hex Head	2
18*	N00-5225	N-G1-37, GASKET, REGULATOR BODY	1
19*	N00-5015	N-F3-1, SPONGE	1
20*	N00-6801	N-S4-7, SEAT, PRIMARY	1
21	N00-4212	N-AB1-19-1, Body Assembly, Heat Exchanger: N-B1-19-1, N-J1-9	1
22*	N00-5224	N-G1-35, GASKET, HEAT EXCHANGER COVER	1
23	N00-4507	N-C1-21, Cover, Heat Exchanger	1
24*	N00-6400	N-S1-3 SCREW, 10-24 X 5/8" SEMS	6 (RK 3)

* Indicates Repair Kit Components

** Blue secondary spring (N00-6610) requires approximately -1.5 inH2O (-3.736 mbar) outlet fuel flow initiation pressure.

*** Orange spring gives negative 1/2" water column

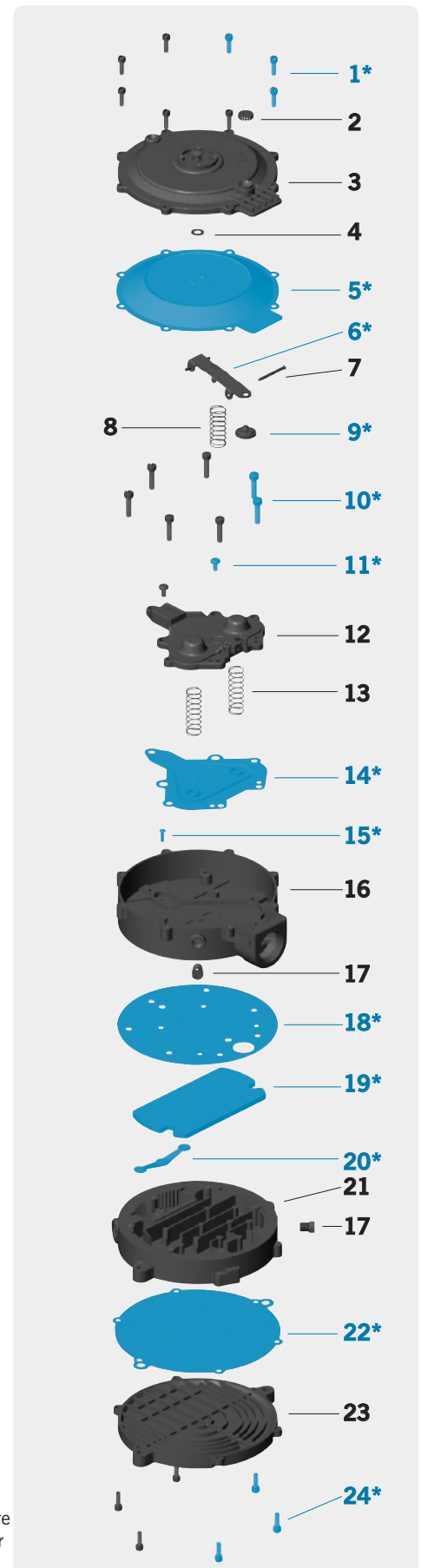
REPAIR KIT: (Components marked with (*) and shown in blue)

N00-6301A N-RK-E-2, Repair Kit with Silicone Diaphragm

ORDERING INFO

Part No.	Description
N00-0001A	N-EB-2 Regulator w/ Silicone Diaphragm
	N-EO w/orange spring available on request

Note: Parts in blue are components of Repair Kit (N-RK-E-2).



Note: While only certain parts are available for purchase, all parts are listed for reference purposes.