



CA70 Series

Carburetors consist of a mixer and throttle body assembly, and an optional air horn. The mixer has a replaceable air valve assembly. The charts below describe these components and the most common combinations available as CA70 Series carburetors. Other combinations of air valve assemblies and air horns can be built for your specific requirements. (Minimum quantities may be required.)

Letters in () refer to the dimension diagrams on this page. Numbers in () indicate metric dimensions.

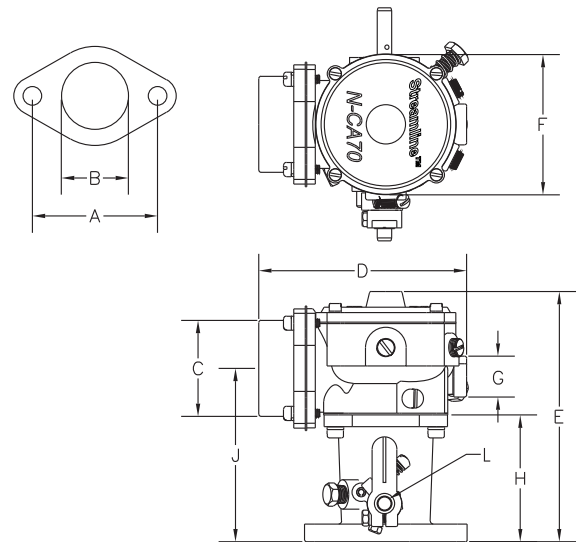


AIR VALVE ASSEMBLY (Item No. 11 on Parts List)

Part No.	Model No.	Description
N-FBV1-70-3A	--	Feedback, silicone diaphragm

AIR HORN ASSEMBLY (Item No. 18 on Parts List)

Part No.	Model No.	Description	Diameter (C)
N1-4064	N-A2-36	Aluminum	1-1/2" (38.1mm)
N1-4065	N-A2-37	Aluminum	1-5/8" (41.40mm)
N00-4066	N-A2-38	Aluminum	1-7/8" (47.75mm)
N00-4067	N-A2-39	Aluminum	2-1/16" (52.32mm)
N00-4068	N-A2-39-1	Polycarbonate	2-1/16" (52.32mm)
N00-4070	N-A2-41	Polycarbonate	2-5/16" (58.67mm)
N00-4070-1	N-A2-41	Aluminum	2-5/16" (58.67mm)



N-FB70M-A MIXER (Item No. 21 on Parts List)

The N-FB70MA mixer has a feedback air valve assembly. All air horn sizes can be used on this model.

THROTTLE BODY ASSEMBLIES (Item No. 40 on Parts List)

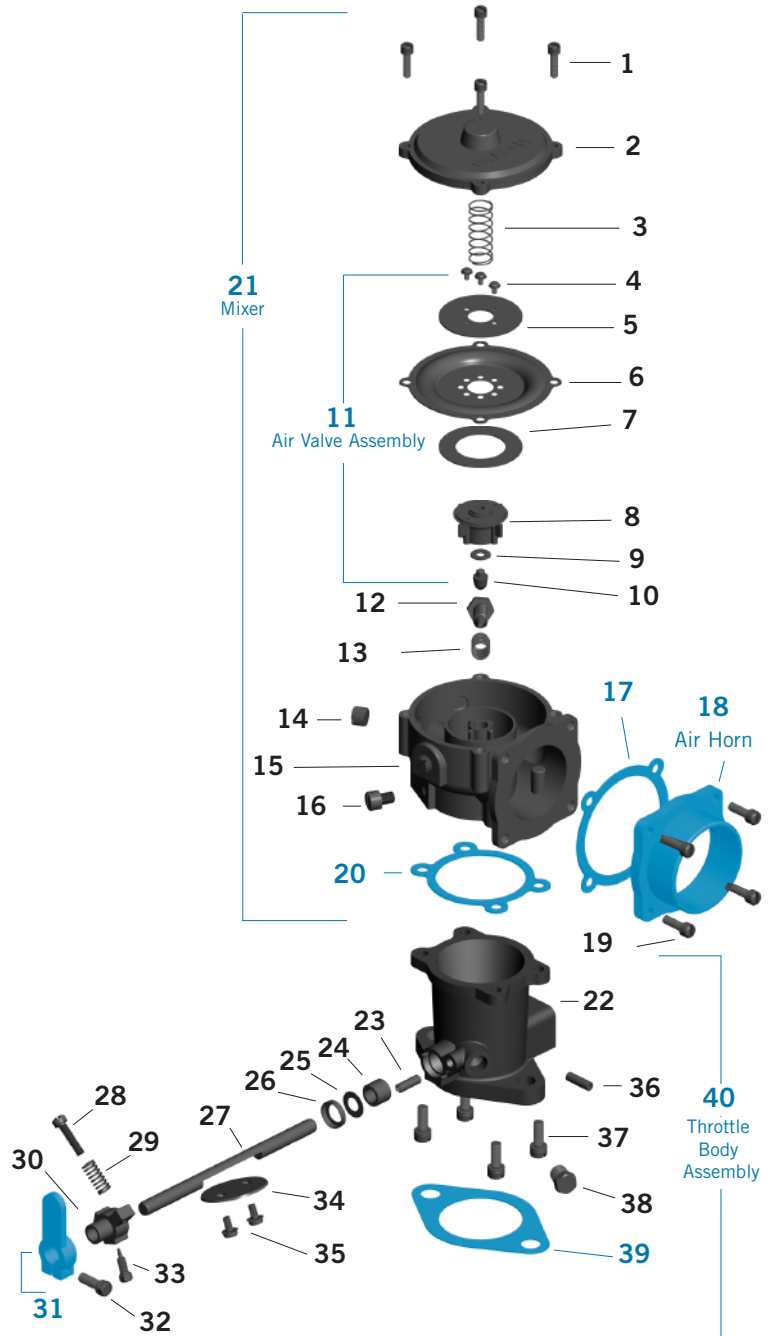
Part No.	Model No.	Flange	Center to Center Bolt Spacing (A)	Bore (B)	Height (H)	Shaft Dia. (L)
N1-7201	N-AT2-1	3/4" SAE (19.05mm)	2-1/4" (57.15mm)	1-1/6" (26.92mm)	1-3/8" (35.05mm)	1/4" (6.35mm)
N00-7206	N-AT2-2-5	1" SAE (25.4mm)	2-3/8" (60.45mm)	1-3/16" (31.24mm)	1-3/8" (35.05mm)	5/16" (8.13mm)
N00-7208	N-AT2-3	1-1/4" SAE (31.75mm)	2-11/16" (68.33mm)	1-7/16" (36.58mm)	2-23/32" (69.09mm)	5/16" (8.13mm)
N00-7239	N-AT2-16-1	1-1/4" and 1-1/2", short (31.75mm and 38.1mm)	2-13/16" (71.37mm)	1-11/16" (42.93mm)	1-5/8" (41.40mm)	5/16" (8.13mm)
N00-7271A	—	1" SAE (25.4mm)*	3-1/4" (82.55mm)	1-3/16" (31.24mm)	3" (76.2mm)	0.31" (7.87mm)
N1-7210	N-AT2-4-1	1-1/2" (38.1mm)	2-15/16" (74.68mm)	1-11/16" (42.93mm)	2-13/16" (71.37mm)	5/16" (8.13mm)
N1-7214	N-AT2-4-3	1-3/4" (44.45mm)	3-5/16" (84.07mm)	1-11/16" (42.93mm)	2-13/16" (71.37mm)	5/16" (8.13mm)
N00-7223	N-AT2-23	1-1/4" SAE short (31.75mm)	2-11/16" (68.33mm)	1-7/16" (36.58mm)	1-38" (35.05mm)	5/16" (8.13mm)

(*) Nissan H20-II / H25 Engines

CA70 CARBURETOR ASSEMBLIES

Carburetors in the CA70 Series can be custom built to your specific requirements. Please contact factory for assemblies suitable for your engine application.

ITEM	PART NO.	DESCRIPTION	QTY.
1	N00-6443	N-S1-59, Screw, 8-32 x 5/8" SEMS	4
2	N-C1-6	Cover, Diaphragm	1
3	N-S3-70	Spring, Air Valve	1
4	N-S10-11	Screw, 4-40 x 1/4" SEMS	3
5	N-P2-70	Plate, Diaphragm Backup	1
6	N-D1-70-2	Diaphragm, Silicone	1
7	N-R1-70	Ring, Air Valve	1
8	N-V1-70	Air Valve	1
9	N-W1-70	Washer, Gas Valve, Feedback	1
10	N-V2-70-2	Gas Metering Valve, Feedback	1
11		SEE AIR VALVE ASSEMBLY CHART ON PREVIOUS PAGE	1
12	N-S2-70	Screw, Idle, 5/16-18 Hex Head	1
13	N-S11-9	Spring, Idle Screw	1
14	N2-1011	N-P3-3, Plug, 1/8" NPT, Brass	3
15	N-B9-1	Body, Mixer	1
16	N00-6453	N-S1-69, Screw, 1/4-28 x 5/16" Slotted Fillister Head	2
17	N00-5267	N-G1-101, GASKET FOR AIR HORN	1
18		SEE AIR HORN CHART ON PREVIOUS PAGE	1
19	N00-6400	N-S1-3, Screw, 10-24 x 5/8" SEMS Slotted Fillister Head	4
20	N00-5204	N-G1-11, GASKET, THROTTLE BODY TO MIXER	1
21		SEE MIXER CHART ON PREVIOUS PAGE	1
22		Throttle Body	1
23	N00-5901	N-P1-5, Pin, Throttle Stop	1
24	N00-4305	N-B2-11, Bearing, Oilite, 1/4" ID (6.4mm)	2
	N00-4306	N-B2-12, Bearing, Oilite, 5/16" ID (7.9mm)	
25	N00-6706	N-S3-8, Seal, 1/4" Shaft (6.4mm)	2
	N00-6707	N-S3-9, Seal, 5/16" Shaft (7.9mm)	
26	N00-6203	N-R1-9, Ring, Seal Retainer	2
27	N00-6900	N-S5-1, Throttle Shaft, 1/4" Dia. (6.4mm): N-T2-1, N-T2-2	1
	N00-6901	N-S5-2, Throttle Shaft, 5/16" Dia. (7.9mm): N-T2-3, N-T2-4-1, N-T2-4-3, N-T2-16, N-T2-23	
	N00-6911	N-S5-11, Throttle Shaft, 5/16" Dia. (7.9mm): N-T2-3, N-T2-4-1, N-T2-4-3, N-T2-16, N-T2-23	
28	N00-6415	N-S1-21, Stop Screw, 10-32 x 3/4"	1
29	N00-6605	N-S2-15, Spring, Idle Stop Screw	1
30	N00-5611	N-AL1-8-1, Throttle Stop Ass'y., 1/4" ID (6.4mm): N-L1-8-1, N-S2-15, N-S2-21, N-S1-18	1
	N00-5612	N-AL1-8-2, Throttle Stop Ass'y., 5/16" ID (7.9mm): N-L1-8-2, N-S2-15, N-S1-21, N-S1-28	
31	N00-5601	N-AL1-7-1, THROTTLE LEVER, LONG, W/SCREW, N-L1-7-1, N-S1-1	1
17	N00-5603	N-AL1-7-3, THROTTLE LEVER, SHORT, W/SCREW, N-L1-7-3, N-S1-1	1
	N00-5604	N-AL1-7-4, THROTTLE LEVER, LONG, W/SCREW AND SWIVEL	
32	N00-6411	N-S1-17, Screw, Clamp 10-24 x 5/8"	1
33	N00-6412	N-S1-18, Pin Screw, Throttle Stop	1
34	N00-5000	N-F2-1, Fly, 3/4" (19.1mm)	1
	N00-5001	N-F2-2, Fly, 1" (25.4mm)	
	N00-5002	N-F2-3, Fly, 1-1/4" (31.75mm)	
	N00-5003	N-F2-4, Fly, 1-1/2" (38.1mm)	
	N00-5004	N-F2-5, Fly, 1-3/4" (44.45mm)	
35	N00-6416	N-S1-22, Screw, 6-32 x 1/4" SEMS	2
	N00-6408	N-S1-12, Screw, 8-32 x 5/16" SEMS	
36	N00-7101	N-T1-7, Vacuum Port Tube	1
37	N00-6413	N-S1-19, Screw 12-24 x 5/8 "SEMS	4
38	N00-6104	N-P3-13, Plug, 1/8" Pipe, Hex Head	1
39	N00-5207	N-G1-16, GASKET, 3/4" (19.1mm) FLANGE	1
	N00-5208	N-G1-17, GASKET, 1" (25.4mm) FLANGE	
	N00-5209	N-G1-18, GASKET, 1-1/4" (31.75mm) FLANGE	
	N00-5210	N-G1-19, GASKET, 1-1/2" (38.1mm) FLANGE	
	N00-5214	N-G1-23, GASKET, 1-3/4" (44.45mm) FLANGE	
	N00-5239	N-G1-56, GASKET, 1-1/4" - 1-1/2" (31.75-38.1mm) FLANGE	
	N00-5241	GASKET, THROTTLE BODY, N00-7271	
40		SEE THROTTLE BODY ASSEMBLY CHART ON PREVIOUS PAGE	1



Note: Part numbers shown in **BOLDFACE BLUE CAPITAL LETTERS** are available for purchase. Minimum quantities may be required. All parts are listed for reference purposes. Specifications subject to change without notice.