

Model N-VFF30 Series Vacuum Fuellock Filter — 325 HP
Parts Description, Installation & Operation

GENERAL The N-VFF30 is a vacuum operated lockoff designed for low engine vacuum activation. It also contains a filter to remove foreign materials from the fuel. It is used with high pressure LPG vapor or liquid withdrawal, where dependable fuel shut-off is required. It can be used for many mobile powered applications, such as forklifts, floor buffers or pressure washers.

WARNING! The N-VFF30 should be installed and maintained per these instructions and all applicable federal, state, and local laws and codes.

Special Note in regards to NFPA Pamphlet 58: For indoor applications by NFPA definition, a regulator is not considered a positive shut-off valve. An approved automatic shut-off device is required to be installed. This will shut off the fuel supply should the engine fail while unattended. Shut-off devices come in vacuum- or solenoid-actuated configurations.

OPERATION The N-VFF30 is a dedicated vacuum operated fuellock designed to shut-off and release fuel. When engine vacuum ceases, a spring force causes the valve seat to close, shutting off the fuel. **It is important to remember that fuel should not flow to the engine when it is not in operation.** A properly installed N-VFF30 requires approximately 2 inches of water vacuum to start the opening sequence.

INSTALLATION The N-VFF30 should be mounted between the fuel supply and the vaporizer/regulator and be connected to an available manifold vacuum source.

SERVICE The N-VFF30 should be periodically checked for leakage. If the unit requires service, we suggest you take it to a qualified service technician. If not available, Woodward will furnish a list of repair facilities or provide service information.



U.L. Listed

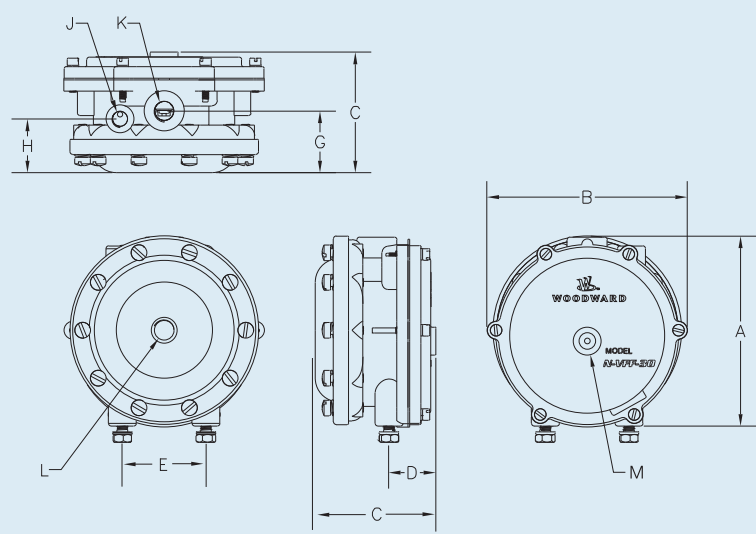


N-VFF30 Series

- Fuel lock and filter in one unit
- Low (2" W.C.) vacuum signal activation
- Liquid or vapor fuel
- Rated to 312 psi maximum inlet pressure

FUELOCK SPECIFICATIONS

- A. Overall Height 4⁹/₃₂" (108.7 mm)
- B. Overall Width 4¹/₂" (114.3 mm)
- C. Overall Depth 2³/₄" (69.9 mm)
- D. Front of Fuellock to Center of Mounting Hole 1⁵/₁₆" (23.8 mm)
- E. Mounting Holes Center to Center 1⁷/₈" (47.6 mm)
- F. Mounting Hole Diameter 1/4"-20
- G. Back of Fuellock to Center of Fuel Outlet 1⁷/₁₆" (36.5 mm)
- H. Back of Fuellock to Center of Vacuum Port 1¹/₄" (31.6 mm)
- J. Air Valve Vacuum Port NPT 1/8" (3.2 mm)
- K. Fuel Outlet NPT 1/4" (6.35 mm)
- L. Fuel Inlet NPT 1/4" (6.35 mm)
- M. Vent Accepts 1/8" (3.2 mm) NPT



PARTS LISTING

Item	Part No.	Description	Qty.
1*	N00-6443	N-S1-59, Screw, 8-32 x 5/8" SEMS	6 (RK 2)
2	N00-4525	N-C1-37, Cover, Diaphragm	1
3*	N00-4723A	N-AD1-26, DIAPHRAGM ASSEMBLY, SILICONE	1
4	N00-6404	N-S1-7, Screw 8-32 x 1/4"	2
5	N00-5016	N-F3-2, Fulcrum	1
6	N00-5654	N-L1-39, Lever, Valve Opening	1
7	N00-4230A	N-AB1-34, Body Assembly	1
8	N00-6402	N-S1-5, Screw, 1/4-20 x 5/8" SEMS	2
9*	N00-7511	N-W1-42, WASHER, SEAL RETAINING	1
10*	N00-6735-1	N-S3-42, SEAL, O-RING	1
11*	N00-5908	N-P1-15, PIN, VALVE OPERATING	1
12*	N00-6806	N-S4-18, SEAT, VALVE	1
13	N00-6623	N-S2-40, Spring, Valve	1
14	N00-6408	N-S1-12, Screw, 8-32 x 5/16" SEMS	1
15*	N00-7003	N-S7-3, SCREEN, FILTER BACKUP	1
16*	N00-4910	FILTER PAD	1
17*	N00-5260	N-G1-89, GASKET, FILTER COVER	1
18*	N00-4910A	FILTER PAD AND GASKET	1
19	N00-4526	N-C1-38, Cover, Filter	1
20*	N00-6478	N-S1-10, SCREW, 12-24 X 3/4" SEMS	7 (RK 2)

* Indicates Repair Kit Components

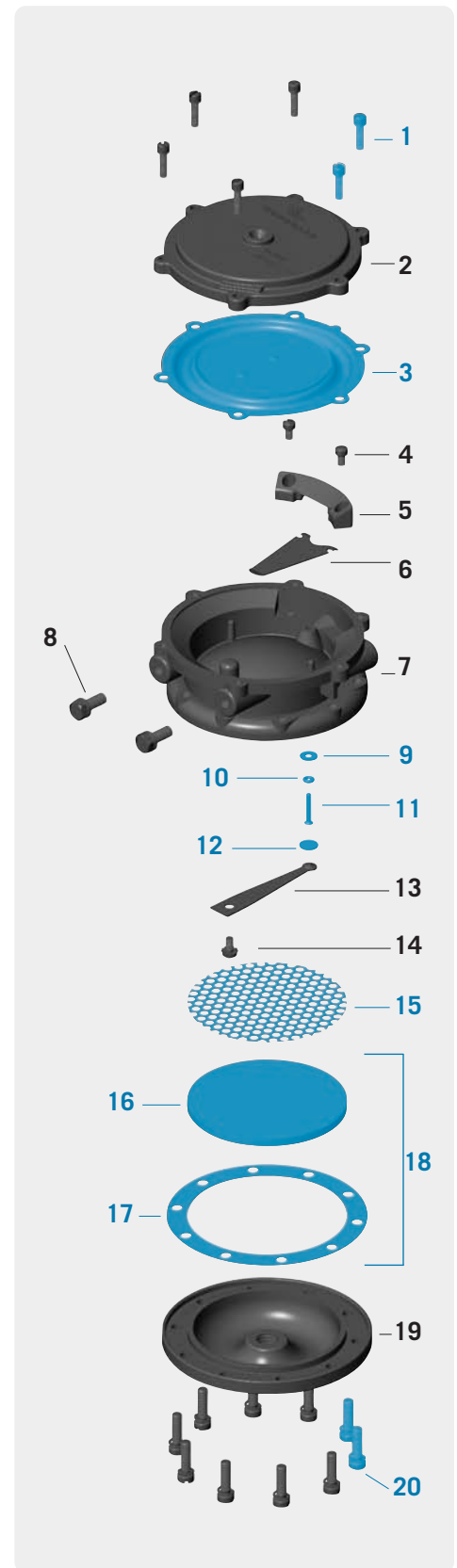
REPAIR KITS: (Components shown in blue)

- N00-6321A** N-RKVFF30-2, Repair Kit with Silicone Diaphragm
- N00-4910A** Item 18, Filter Pad and Gasket only

ORDERING INFO

Part No.	Model No.	Diaphragm	Primer	Check Valve	UL Listed
N00-0124A	N-VFF30-2 *	Silicone			•
N00-0125A	N-VFF30-2	Silicone			•
N00-0126A	N-VFF30-2-3	Silicone		•	•
N00-0128A	N-VFF30-2-4	Silicone	•	•	•
N00-0129A	N-VFF30-2-5	Silicone	•		•

(*) Blank Cover



Note: Parts in blue are components of Repair Kit (N-RKVFF30-2).

Note: While only certain parts are available for purchase, all parts are listed for reference purposes.