

**Model N-PJ (CNG) – 100 HP**

**Parts Description, Installation & Operation**

**GENERAL** The N-PJ type regulator is a two-stage positive pressure regulator for CNG applications up to 100 HP output.

**WARNING!** The N-PJ should be installed and maintained per these instructions and all applicable federal, state, and local laws and codes.

**Special Note in regards to NFPA Pamphlet 58:** For indoor applications by NFPA definition, a regulator is not considered a positive shut-off valve. An approved automatic shut-off device is required to be installed. This will shut off the fuel supply should the engine fail while unattended. Shut-off devices come in vacuum- or solenoid-actuated configurations.

**IMPORTANT NOTE:** The N-PJ is rated to 312 psi inlet pressure. In CNG applications (where tank pressure may exceed 3000 psi) a separate high-pressure regulator must be installed between the tank and the N-PJ to reduce the incoming pressure below 312 psi.

**OPERATION** The low pressure N-PJ regulator is a positive pressure output, two-stage regulator. The unit reduces the compressed natural gas received from the high pressure regulator to an outlet pressure slightly above atmospheric pressure.

**INSTALLATION** The N-PJ should be mounted as close to the carburetor as possible, with the fuel outlet placed in the lowest position for best flow.

**SERVICE** The N-PJ should be periodically checked for leakage. If the unit requires service, we suggest you take it to a qualified service technician. If not available, Woodward will furnish a list of repair facilities or provide service information.

**ORDERING INFO**

Part No.	Description
<b>NOO-0027A</b>	N-PJ, CNG Regulator, Silicone Diaphragm

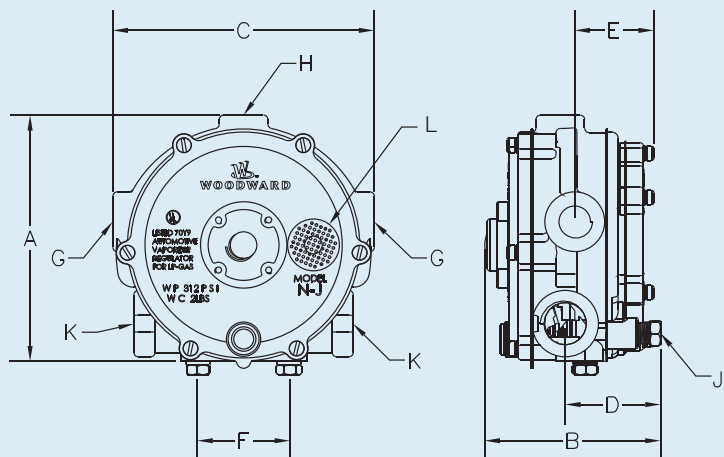


**NOO-0027A**

- Positive pressure regulator for natural gas, CNG and LP applications
- Rated to 312 psi maximum inlet pressure

**REGULATOR SPECIFICATIONS**

- A. Overall Height . . . . . 4<sup>3</sup>/<sub>8</sub>" (111.1 mm)
- B. Overall Depth . . . . . 3<sup>13</sup>/<sub>16</sub>" (96.8 mm)
- C. Overall Width . . . . . 4<sup>5</sup>/<sub>8</sub>" (117.5 mm)
- D. Back of Regulator to Center of Vapor Fuel Outlet . . . . . 1<sup>5</sup>/<sub>8</sub>" (41.3 mm)
- E. Back of Regulator to Center of Water Outlet . . . . . 1<sup>3</sup>/<sub>8</sub>" (34.9 mm)
- F. Mounting Holes Center to Center . . . . . 1<sup>5</sup>/<sub>8</sub>" (41.3 mm)
- G. Coolant Inlet & Outlet NPT . . . . . 3/8" (9.5 mm)
- H. Vapor Fuel Inlet NPT . . . . . 1/4" (6.4 mm)
- J. Primary Test Port NPT . . . . . 1/8" (3.2 mm)
- K. Vapor Fuel Outlet NPT . . . . . 1/2" (12.7 mm)
- L. Vent/Balance Line Connect NPT . . . 1/8" (3.2 mm)



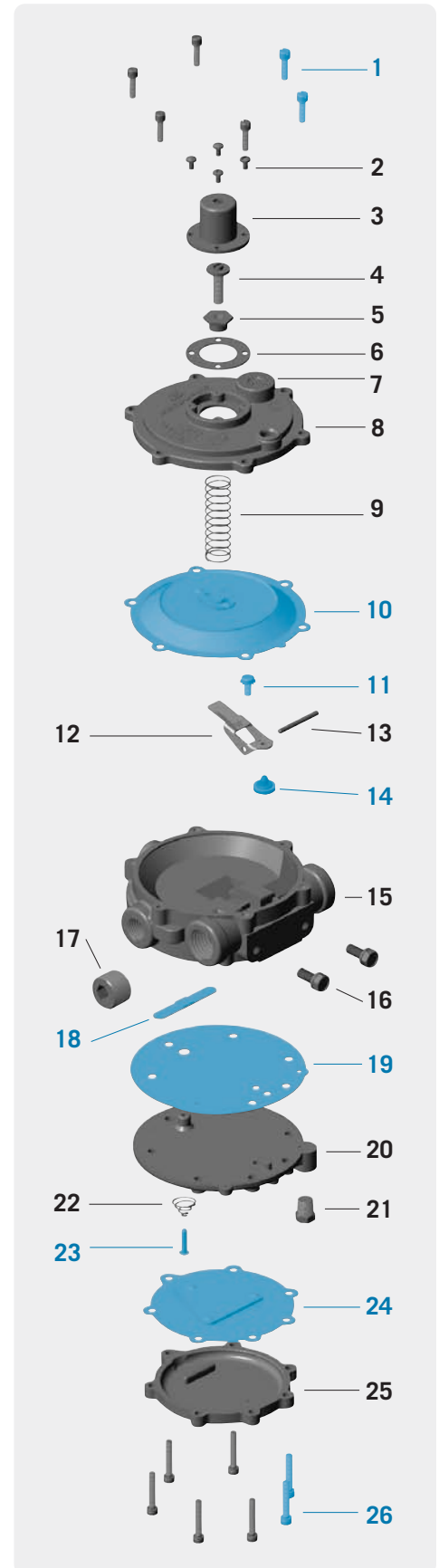
**PARTS LISTING**

Item	Part No.	Description	Qty.
1*	<b>N00-6443</b>	<b>N-S1-59, SCREW, 8-32 X 5/8" SEMS</b>	<b>6 (RK2)</b>
2	N00-6416	N-S1-22, Screw, 6-32 x 1/4" SEMS	4
3	N-C2-4	Cap, Spring Retainer	1
4	N-S2-9	Screw, Spring Retainer	1
5	N-N1-1	Nut, Spring Housing	1
6	N00-5255	Gasket, Spring Retainer	1
7	N00-7004	N-S7-4, Screen, Atmospheric Vent	1
8	N00-4523-2	N-AC1-34-3, Cover Assembly, Secondary	1
9	N-S3-6	Spring, Positive Pressure	1
10*	<b>N00-4733A</b>	<b>N-AD1-26-2, DIAPHRAGM ASSEMBLY, SILICONE</b>	<b>1</b>
11*	<b>N00-6434</b>	<b>N-S1-42, SCREW 8-32 X 3/8" SEMS</b>	<b>1</b>
12	N00-5651	N-L1-37, Lever, Secondary Regulator	1
13	N00-5904	N-P1-8, Pin, Secondary Fulcrum	1
14*	<b>N00-6812</b>	<b>N-S4-27, SEAT, SECONDARY REGULATOR</b>	<b>1</b>
15	N00-4229A	N-AB1-33, Body Assembly	1
16	N00-6402	N-S1-5, Screw, 1/4-20 x 5/8" SEMS	2
17	N00-6105	N-P3-14, Plug 1/2" NPT	1
18*	<b>N00-6804</b>	<b>N-S4-16, SEAT, PRIMARY REGULATOR</b>	<b>1</b>
19*	<b>N00-5256</b>	<b>N-G1-85, GASKET, BODY TO PLATE</b>	<b>1</b>
20	N00-6009	N-P2-26, Plate, Converter Body Cover	1
21	N00-6104	N-P3-13, Plug, 1/8" Pipe, Hex Head	1
22	N00-6711	N-S3-15, Spring, Primary Valve	1
23*	<b>N00-5907</b>	<b>N-P1-14, PIN, PRIMARY VALVE</b>	<b>1</b>
24*	<b>N00-4717A</b>	<b>N-AD1-22, DIAPHRAGM ASSEMBLY, PRIMARY</b>	<b>1</b>
25	N00-4521	N-C1-33, Cover, Primary Regulator	1
26*	<b>N00-6406</b>	<b>N-S1-10, SCREW, 8-32 X 1" SEMS</b>	<b>7 (RK2)</b>

\* Indicates Repair Kit Components

**REPAIR KIT:** (Components shown in blue)

**N00-6315A** N-RK-PJ, Repair Kit with Silicone Diaphragm



Note: Parts in blue are components of Repair Kit (N-RK-PJ).

Note: While only certain parts are available for purchase, all parts are listed for reference purposes.