

**Model N-EB-2 Series Regulators For LP-Gas – 400 HP  
Parts Description, Installation & Operation**

**GENERAL** The N-E regulator is an LPG liquid withdrawal high pressure regulator. This regulator provides excellent fuel delivery with liquid-cooled engines up to 400 HP.

**WARNING!** The N-E should be installed and maintained per these instructions and all applicable federal, state, and local laws and codes.

**Special Note in regards to NFPA Pamphlet 58:** For indoor applications by NFPA definition, a regulator is not considered a positive shut-off valve. An approved automatic shut-off device is required to be installed. This will shut off the fuel supply should the engine fail while unattended. Shut-off devices come in vacuum- or solenoid-actuated configurations.

**OPERATION** Inside the N-E regulator, liquid propane enters the regulator and then is vaporized using heat from the engine's coolant. Tank pressure is reduced to approximately 1.5 psi. As negative pressure is transmitted from the carburetor to the regulator, the regulator releases propane vapor to the carburetor. N-E regulators are equipped with a primer button. A correctly installed regulator should not require priming. If priming is required, a maximum duration of only 1 second should be used.

**INSTALLATION** The N-E should be mounted as close to the carburetor as possible, with the fuel outlet placed in the lowest position for best flow.

**SERVICE** The N-E should be periodically checked for leakage. If the unit requires service, we suggest you take it to a qualified service technician. If not available, Woodward will furnish a list of repair facilities or provide service information.

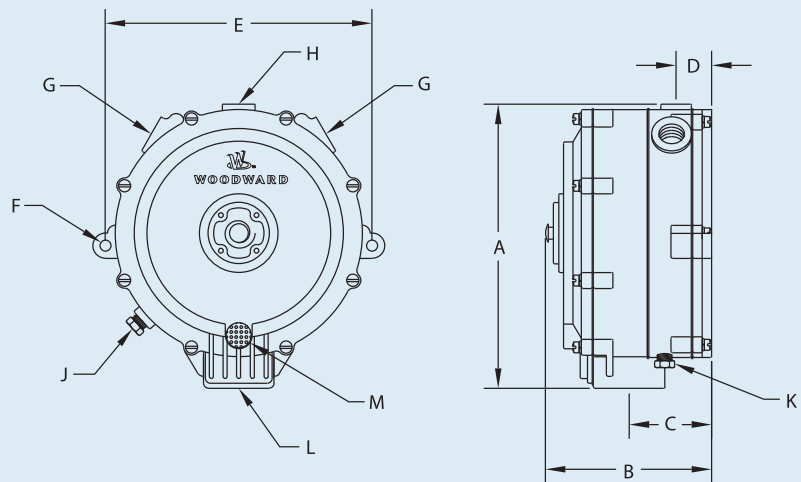


**N-EB-2 Series**

- Propane liquid withdrawal vaporizing regulator
- For liquid-cooled engines up to 400 HP
- -1.5" W.C. fuel initiation (break-off) pressure
- Rated to 312 psi maximum inlet pressure

**REGULATOR SPECIFICATIONS**

- A. Overall Height . . . . . 7¼" (184.2 mm)
- B. Overall Depth . . . . . 4" (101.6 mm)
- C. Back of Converter to Center of Vapor Fuel Outlet . . . . . 2" (50.8 mm)
- D. Back of Converter to Center of Water Outlet . . . . . 1" (25.4 mm)
- E. Mounting Holes, Center-to-Center . . . . . 6⅝" (168.3 mm)
- F. Mounting Hole Diameter . . . . . ⅜" (7.1 mm)
- G. Coolant Inlet & Outlet NPT . . . . . ⅜" (9.5 mm)
- H. LPG Fuel Inlet NPT . . . . . ¼" (6.4 mm)
- J. Secondary Accessory Port NPT . . ⅜" (3.2 mm)
- K. Primary Test Port NPT . . . . . ⅜" (3.2 mm)
- L. Vapor Fuel Outlet NPT . . . . . 1" (25.4 mm)
- M. Vent/Balance Line Connection NPT . . . . . ⅜" (3.2 mm)



**PARTS LISTING**

Item	Part No.	Description	Qty.
1*	<b>N00-6400</b>	<b>N-S1-3, SCREW, 10-24 X 5/8" SEMS</b>	<b>8 (RK3)</b>
2	N00-7002	N-S7-1, Screen, Atmospheric Vent	1
3	N00-4509	N-ACI-22-1, Cover Assembly, Secondary: with Primer Button	1
4	N00-7505	N-W1-27, Washer, Hand Primer	1
5*	<b>N00-4718A</b>	<b>N-AD1-23, DIAPHRAGM ASSEMBLY, SECONDARY, SILICONE: N-D1-23, N-P22-14, N-P2-14 (2), N-L2-1, N-R2-3 (2)</b>	<b>1</b>
6*	<b>N00-5681</b>	<b>N-L1-86A, LEVER, SILICONE</b>	<b>1</b>
7	N00-5903	N-P1-7, Pin, Secondary Lever Fulcrum	1
8	N00-6610**	N-S2-22, Spring, Secondary Regulator, (Blue) -1.5" W.C.	1
9*	<b>N00-6820</b>	<b>N-S4-37, SEAT, SECONDARY</b>	<b>1</b>
10*	<b>N00-6431</b>	<b>N-S1-39, SCREW, 12-24 X 7/8" SEMS</b>	<b>7 (RK2)</b>
11*	<b>N00-6432</b>	<b>N-S1-40, SCREW, 10-24 X 3/8" SEMS</b>	<b>2</b>
12	N00-4506	N-C1-20, Cover, Primary Diaphragm	1
13	N00-6604	N-S2-13, Spring, Primary Regulator	2
14*	<b>N00-4709A</b>	<b>N-AD1-15, DIAPHRAGM ASSEMBLY, PRIMARY: N-D1-15, N-P2-16, N-P2-17, N-R2-3 (3)</b>	<b>1</b>
15*	<b>N00-5906</b>	<b>N-P1-11, PIN, PRIMARY VALVE</b>	<b>2</b>
16	N00-4216	N-AB1-20, Body, Regulator: N-B1-20, N-J1-13	1
17	N00-6104	N-P3-13, Plug, 1/8" Pipe, Hex Head	2
18*	<b>N00-5225</b>	<b>N-G1-37, GASKET, REGULATOR BODY</b>	<b>1</b>
19*	<b>N00-5015</b>	<b>N-F3-1, SPONGE</b>	<b>1</b>
20*	<b>N00-6801</b>	<b>N-S4-7, SEAT, PRIMARY</b>	<b>1</b>
21	N00-4212	N-AB1-19-1, Body Assembly, Heat Exchanger: N-B1-19-1, N-J1-9	1
22*	<b>N00-5224</b>	<b>N-G1-35, GASKET, HEAT EXCHANGER COVER</b>	<b>1</b>
23	N00-4507	N-C1-21, Cover, Heat Exchanger	1
24*	<b>N00-6400</b>	<b>N-S1-3 SCREW, 10-24 X 5/8" SEMS</b>	<b>6 (RK3)</b>

\* Indicates Repair Kit Components

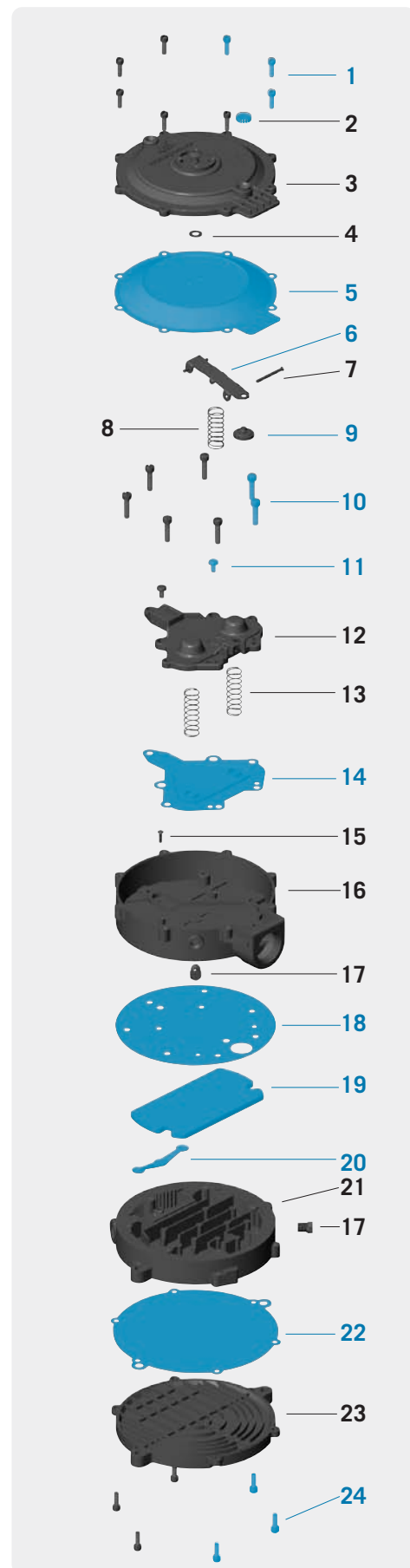
\*\* Blue secondary spring (N00-6610) requires approximately negative 1.5 inches of water outlet fuel flow initiation pressure.

**REPAIR KIT:** (Components shown in blue)

**N00-6301A** N-RK-E-2, Repair Kit with Silicone Diaphragm

**ORDERING INFO**

Part No.	Description
<b>N00-0001A</b>	N-EB-2 Regulator w/ Silicone Diaphragm



Note: Parts in blue are components of Repair Kit (N-RK-E-2).

Note: While only certain parts are available for purchase, all parts are listed for reference purposes.