



N-CA70 Series

Carburetors consist of a mixer and throttle body assembly, and an optional air horn. The mixer has a replaceable air valve assembly. The charts below describe these components and the most common combinations available as CA70 Series carburetors. Other combinations of air valve assemblies and air horns can be built for your specific requirements. (Minimum quantities may be required.)

Letters in () refer to the dimension diagrams on this page. Numbers in () indicate metric dimensions.

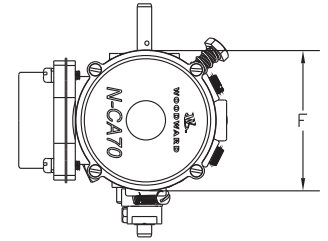
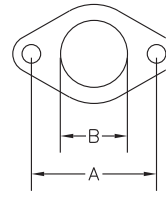


AIR VALVE ASSEMBLY (Item No. 12 on Parts List)

Part No.	Model No.	Description
N-AV1-70-2A	--	Standard, silicone diaphragm
N-FBV1-70-2A	--	Feedback, lean flow, silicone diaphragm
N-FBV1-70-3A	--	Feedback, silicone diaphragm

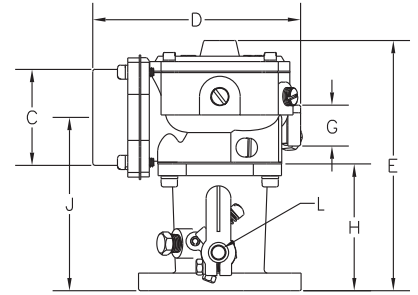
AIR HORN ASSEMBLY (Item No. 19 on Parts List)

Part No.	Model No.	Description	Diameter (C)
N1-4064	N-A2-36	Aluminum	1-1/2" (38.1mm)
N1-4065	N-A2-37	Aluminum	1-5/8" (41.40mm)
N00-4066	N-A2-38	Aluminum	1-7/8" (47.75mm)
N00-4067	N-A2-39	Aluminum	2-1/16" (52.32mm)
N00-4068	N-A2-39-1	Polycarbonate	2-1/16" (52.32mm)
N00-4070	N-A2-41	Polycarbonate	2-5/16" (58.67mm)
N00-4070-1	N-A2-41	Aluminum	2-5/16" (58.67mm)



MIXERS (Item No. 22 on Parts List) The chart below lists the most common mixer assemblies. Please contact factory for other assemblies that can be built to your specific requirements.

AIR HORN DIAMETER	Standard Air Valve Mixer Part No.	Feedback Air Valve Mixer Part No.	Lean Feedback Air Valve Mixer Part No.
None	N-CA70M-A	N-FB70M-A	—
1-1/2" (38.1mm)	N-CA70M-1A	N-FB70M-1A	—
1-5/8" (41.40mm)	N-CA70M-5A	N-FB70M-5A	—
1-7/8" (47.74mm)	N-CA70M-2A	N-FB70M-2A	—
2-1/16" (52.32mm)	N-CA70M-3A	N-FB70M-3A	—
2-1/16" x 2-1/2" L (52.32mm x 63.5mm)	N-CA70M-6A	N-FB70M-6A	N-FB70M-6A-1
2-5/16" polycarbonate (58.67mm)	N-CA70M-4A	N-FB70M-4A	—
2-5/16" aluminum (58.67mm)	N-CA70M-4A	N-FB70M-4A	—



NOTE: Contact factory for lean feedback mixers suited to your particular requirements.

THROTTLE BODY ASSEMBLIES (Item No. 23 on Parts List)

Part No.	Model No.	Flange	Center to Center Bolt Spacing (A)	Bore (B)	Height (H)	Shaft Dia. (L)
N1-7201	N-AT2-1	3/4" SAE (19.05mm)	2-1/4" (57.15mm)	1-1/6" (26.92mm)	1-3/8" (35.05mm)	1/4" (6.35mm)
N00-7206	N-AT2-2-5	1" SAE (25.4mm)	2-3/8" (60.45mm)	1-3/16" (31.24mm)	1-3/8" (35.05mm)	5/16" (8.13mm)
N00-7208	N-AT2-3	1-1/4" SAE (31.75mm)	2-11/16" (68.33mm)	1-7/16" (36.58mm)	2-23/32" (69.09mm)	5/16" (8.13mm)
N00-7239	N-AT2-16-1	1-1/4" and 1-1/2", short (31.75mm and 38.1mm)	2-13/16" (71.37mm)	1-11/16" (42.93mm)	1-5/8" (41.40mm)	5/16" (8.13mm)
N00-7271-1	—	1" SAE (25.4mm)*	3-1/4" (82.55mm)	1-3/16" (31.24mm)	3" (76.2mm)	0.31" (7.87mm)
N1-7210	N-AT2-4-1	1-1/2" (38.1mm)	2-15/16" (74.68mm)	1-11/16" (42.93mm)	2-13/16" (71.37mm)	5/16" (8.13mm)
N1-7214	N-AT2-4-3	1-3/4" (44.45mm)	3-5/16" (84.07mm)	1-11/16" (42.93mm)	2-13/16" (71.37mm)	5/16" (8.13mm)
N00-7223	N-AT2-23	1-1/4" SAE short (31.75mm)	2-11/16" (68.33mm)	1-7/16" (36.58mm)	1-38" (35.05mm)	5/16" (8.13mm)

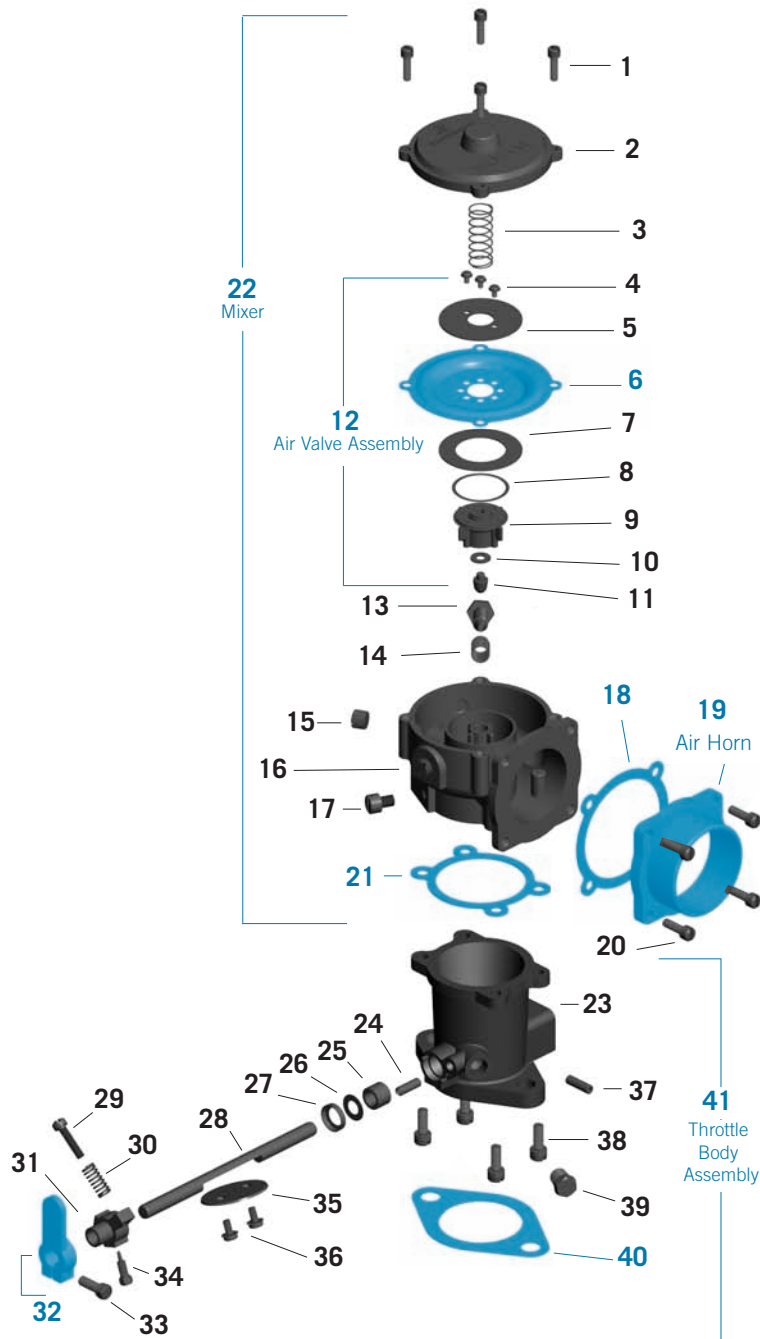
(*) Nissan H20-II / H25 Engines

CA70 CARBURETOR ASSEMBLIES

Carburetor Assembly Part No	Model No.	CARBURETORS COMPRISED OF:				CARBURETOR ASSEMBLY DIMENSIONS			
		Mixer Part No.	Throttle Body Assembly Part No.	Air Horn Part No.	Air Valve Part No.	Depth (D)	Height (E)	Width (F)	Flange to Center of Air Horn (J)
N-CA70-1A	--	N-CA70M-1A	N1-7201	N1-4064	N-AV1-70-2A	4-1/2"	3-7/8"	3"	2-3/8"
N-CA70-1A-2	--	N-CA70M-5A	N1-7201	N1-4065	N-AV1-70-2A	4-1/2"	3-7/8"	3"	2-3/8"
N-CA70-7A	--	N-CA70M-3A	N00-7206	N1-4067	N-AV1-70-2A	—	—	—	—
N-CA70-7ANG	--	N-CA70-7ANG	N00-7206	N1-4067	—	—	—	—	—

NOTE: All above carburetor assemblies are available in feedback models. Please contact factory if you have that requirement.

ITEM	PART NO.	DESCRIPTION	QTY.
1	N00-6443	N-S1-59, Screw, 8-32 x 5/8" SEMS	4
2	N-C1-6	Cover, Diaphragm	1
3	N-S3-70	Spring, Air Valve	1
4	N-S10-11	Screw, 4-40 x 1/4" SEMS	3
5	N-P2-70	Plate, Diaphragm Backup	1
6	N-D1-70-2	Diaphragm, Silicone	1
7	N-R1-70	Ring, Air Valve	1
8	N-R12-1	Ring, Lean Idle Mixture *	1
9	N-V1-70	Air Valve	1
10	N-W1-70-2	Washer, Gas Valve *	1
	N-W1-70	Washer, Gas Valve, Feedback †	
11	N-V2-70	Gas Metering Valve *	1
	N-V2-70-2	Gas Metering Valve, Feedback †	
12		SEE AIR VALVE ASSEMBLY CHART ON PREVIOUS PAGE	1
13	N-S2-70	Screw, Idle, 5/16-18 Hex Head	1
14	N-S11-9	Spring, Idle Screw	1
15	N2-1011	N-P3-3, Plug, 1/8" NPT, Brass	3
16	N-B9-4	Body, Mixer	1
17	N00-6453	N-S1-69, Screw, 1/4-28 x 5/16" Slotted Fillister Head	2
18	N00-5267	N-G1-101, Gasket for Air Horn	1
19		SEE AIR HORN CHART ON PREVIOUS PAGE	1
20	N00-6400	N-S1-3, Screw, 10-24 x 5/8" SEMS Slotted Fillister Head	4
21	N00-5204	N-G1-11, Gasket, Throttle Body to Mixer	1
22		SEE MIXER CHART ON PREVIOUS PAGE	1
23		Throttle Body	1
24	N00-5901	N-P1-5, Pin, Throttle Stop	1
25	N00-4305	N-B2-11, Bearing, Oilite, 1/4" ID (6.4mm)	2
	N00-4306	N-B2-12, Bearing, Oilite, 5/16" ID (7.9mm)	
26	N00-6706	N-S3-8, Seal, 1/4" Shaft (6.4mm)	2
	N00-6707	N-S3-9, Seal, 5/16" Shaft (7.9mm)	
27	N00-6203	N-R1-9, Ring, Seal Retainer	2
28	N00-6900	N-S5-1, Throttle Shaft, 1/4" Dia. (6.4mm): N-T2-1, N-T2-2	1
	N00-6901	N-S5-2, Throttle Shaft, 5/16" Dia. (7.9mm): N-T2-3, N-T2-4-1, N-T2-4-3, N-T2-16, N-T2-23	
	N00-6911	N-S5-11, Throttle Shaft, 5/16" Dia. (7.9mm): N-T2-3, N-T2-4-1, N-T2-4-3, N-T2-16, N-T2-23	
29	N00-6415	N-S1-21, Stop Screw, 10-32 x 3/4"	1
30	N00-6605	N-S2-15, Spring, Idle Stop Screw	1
31	N00-5611	N-AL1-8-1, Throttle Stop Ass'y., 1/4" ID (6.4mm): N-L1-8-1, N-S2-15, N-S2-21, N-S1-18	1
	N00-5612	N-AL1-8-2, Throttle Stop Ass'y., 5/16" ID (7.9mm): N-L1-8-2, N-S2-15, N-S1-21, N-S1-28	
32	N00-5601	N-AL1-7-1, Throttle Lever, Long, w/Screw, N-L1-7-1, N-S1-17	1
	N00-5603	N-AL1-7-3, Throttle Lever, Short, w/Screw, N-L1-7-3, N-S1-17	
	N00-5604	N-AL1-7-4, Throttle Lever, Long, w/Screw and Swivel	
33	N00-6411	N-S1-17, Screw, Clamp 10-24 x 5/8"	1
34	N00-6412	N-S1-18, Pin Screw, Throttle Stop	1
35	N00-5000	N-F2-1, Fly, 3/4" (19.1mm)	1
	N00-5001	N-F2-2, Fly, 1" (25.4mm)	
	N00-5002	N-F2-3, Fly, 1-1/4" (31.75mm)	
	N00-5003	N-F2-4, Fly, 1-1/2" (38.1mm)	
	N00-5004	N-F2-5, Fly, 1-3/4" (44.45mm)	
36	N00-6416	N-S1-22, Screw, 6-32 x 1/4" SEMS	2
	N00-6408	N-S1-12, Screw, 8-32 x 5/16" SEMS	
37	N00-7101	N-T1-7, Vacuum Port Tube	1
38	N00-6413	N-S1-19, Screw 12-24 x 5/8" SEMS	4
39	N00-6104	N-P3-13, Plug, 1/8" Pipe, Hex Head	1
40	N00-5207	N-G1-16, Gasket, 3/4" (19.1mm) Flange	1
	N00-5208	N-G1-17, Gasket, 1" (25.4mm) Flange	
	N00-5209	N-G1-18, Gasket, 1-1/4" (31.75mm) Flange	
	N00-5210	N-G1-19, Gasket, 1-1/2" (38.1mm) Flange	
	N00-5214	N-G1-23, Gasket, 1-3/4" (44.45mm) Flange	
	N00-5239	N-G1-56, Gasket, 1-1/4" - 1-1/2" (31.75-38.1mm) Flange	
	N00-5241	Gasket, Throttle Body, N00-7271	
41		SEE THROTTLE BODY ASSEMBLY CHART ON PREVIOUS PAGE	1



(*) For use on air valve assembly N-FBV1-70-2A only. (†) For use on air valve assemblies N-FBV1-70-2A and -3A only.

Note: Part numbers shown in **BOLDFACE BLUE** are available for purchase. Minimum quantities may be required. All parts are listed for reference purposes. Specifications subject to change without notice. **boldface blue** are available for purchase.